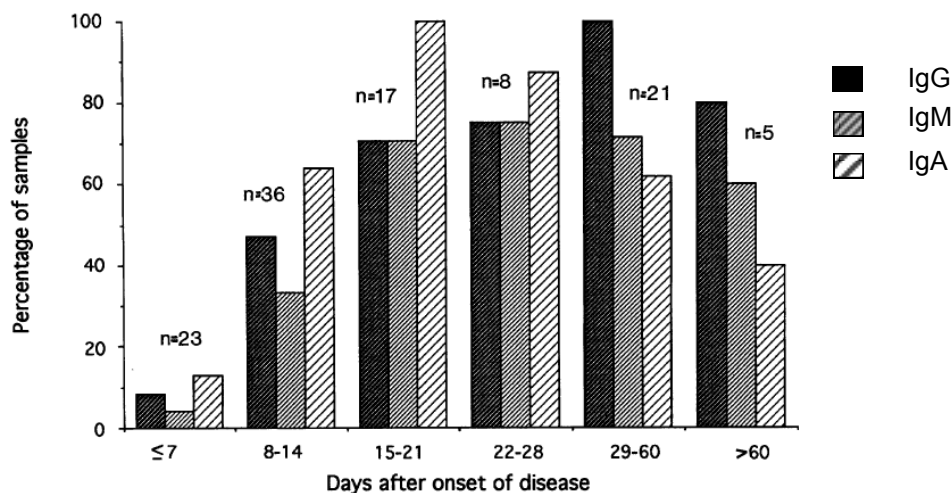


Quelle: www.fotolia.com

Mycoplasma pneumoniae polyvalent ELISA

Efficient diagnostic via polyvalent IgA+IgM conjugate mix

Mycoplasma pn. polyvalent ELISA is used for the semiquantitative and qualitative detection of IgG and the combined detection of IgA and IgM antibodies in human serum. The detection of IgG antibodies are adjusted so that the immunstatus is mainly detected. "The determination of both IgM and IgA is recommended to obtain maximal sensitivity in the determination of the early antibody response." Granström *et al.* (1994). Therefore to enhance the efficiency of the diagnostic testing, IgA and IgM antibodies are determined together with polyvalent IgA+IgM mixed conjugate.



Percentage rate of positive IgG, IgM and IgA titers in serum samples from ELISA-positive patients in relation to time after onset of disease. n= number of available serum samples (Granström *et al.*, 1994).

	Sensitivity	Specificity
IgG	97%	98%
IgA+M	94%	98%

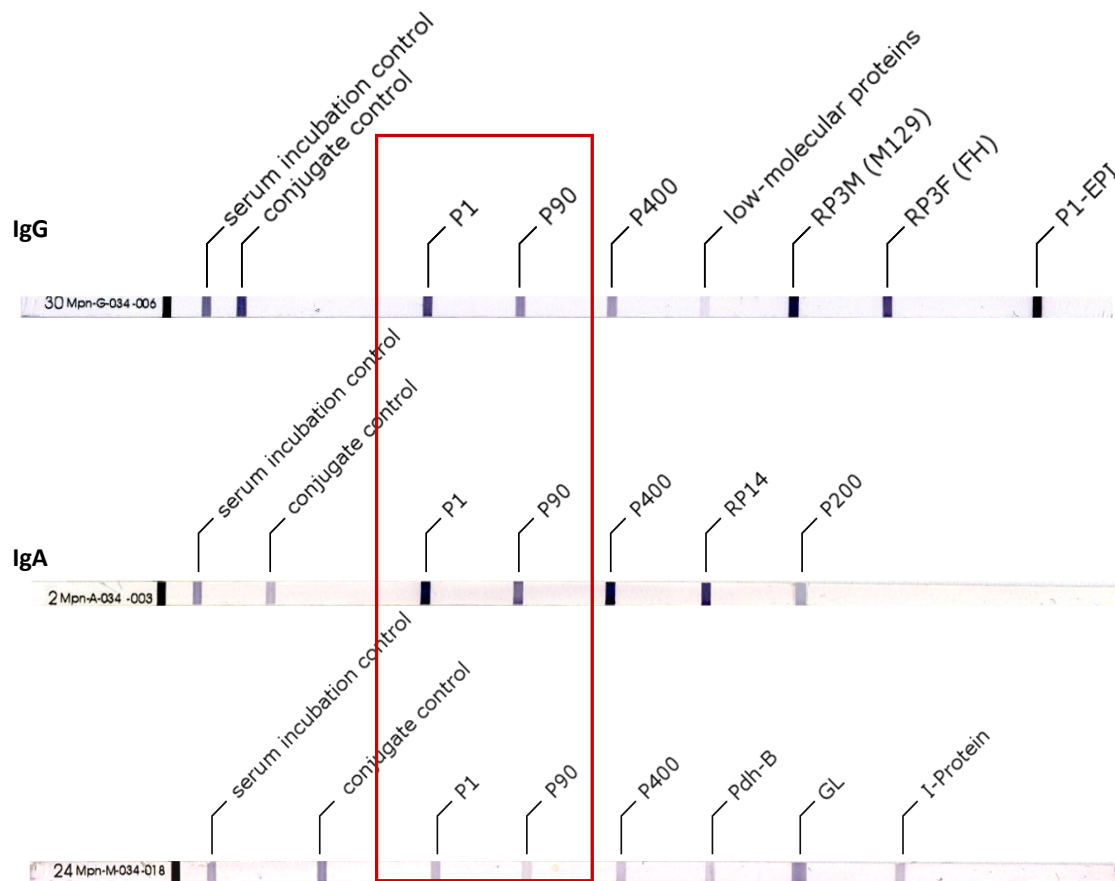
Order No.: EC214.00, 96 IgG , IgA + IgM wells

Granström, M., Holme, T., Sjögren, A. M., Örtqvist, A. , Kalin , M. The role of IgA determination by ELISA in the early serodiagnosis of *Mycoplasma pneumoniae* infection, in relation to IgG and μ -capture IgM methods. *J. Med. Microbiol.* 40 (1994).

Mycoplasma pneumoniae LINE

High Sensitivity & Specificity

- ▼ Ig-class specific combination of **specific, recombinant & purified native proteins**
- ▼ Optimized combination to **established** (P1-adhesin) & **new antigens** (P200 and P400)
- ▼ **Activity Marker:** I-Protein of the Erythrocytes (cold agglutinins in 50-70 % of the *M. pneumoniae*-infections)
- ▼ RP3M & RP3FH: **Differentiation** of both infectious **strains: M129 & FH**
- ▼ P1-EPI band, for **determining the prevalence** with *M. pneumoniae*



Proteins of the Tip-Region

- ▼ Separate **negative and positive controls** are available for your internal quality assurance
- ▼ Easy reading & easy interpretation - manually or with **interpretation software**

Order No.: IgG: WE214G16, 16 IgG strips
WE214P60, IgG pos. control
IgA: WE214A16, 16 IgA strips
WE214P40, IgA pos. control
IgM WE214M16, 16 IgM strips
WE214P80, IgM pos. control
WE214N50 IgG/IgA/IgM neg. control

F_EC214_20160802_1e