

Quelle: www.fotolia.com

Borrelia Diagnostics

Borrelia afzelii ELISA

The used **antigen** is a mix of *B. afzelii* strain PKo, the *B. garinii* strain PBr and the *B. burgdorferi* strain ZS7 that are recommended antigens for Europe.

- ▼ All Borrelia ELISAs* and LINE Immunoblots are validated for the **CSF diagnostic use**
- ▼ Complete CSF **calculation software** available
- ▼ **VlsE** *in vivo* expressed antigen → beside OspC second early marker in IgG serology of Lyme -Borreliosis



Borrelia afzelii +VlsE IgG ELISA

Maximum diagnostic sensitivity due to the additional *in-vivo*-antigen VlsE

Order No.: **EC022G00** (Test kit)
EC022L60 (CSF Standards)

Borrelia afzelii IgM ELISA

High sensitivity due to a strong OspC-expressing *Borrelia afzelii*-strain PKo

Order No.: **EC022M00** (Test kit)
EC022L80 (CSF Standards)

B. afzelii + VlsE IgG Europe ELISA

Increased specificity due to special cut-off adjustment

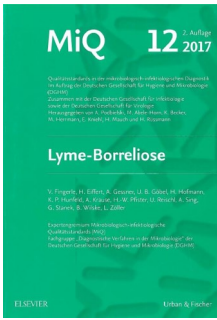
Order No.: **EC024G00** (Test kit)
EC022L60 (CSF Standards)

Borrelia VlsE IgG ELISA

High specific Screening Assay! Coated only with *in vivo* antigens: VlsE of two genospecies (*B. burgdorferi* s.s. and *B. garinii*)

Order No.: **EC023G00** (Test kit)

*exception pure VlsE ELISA



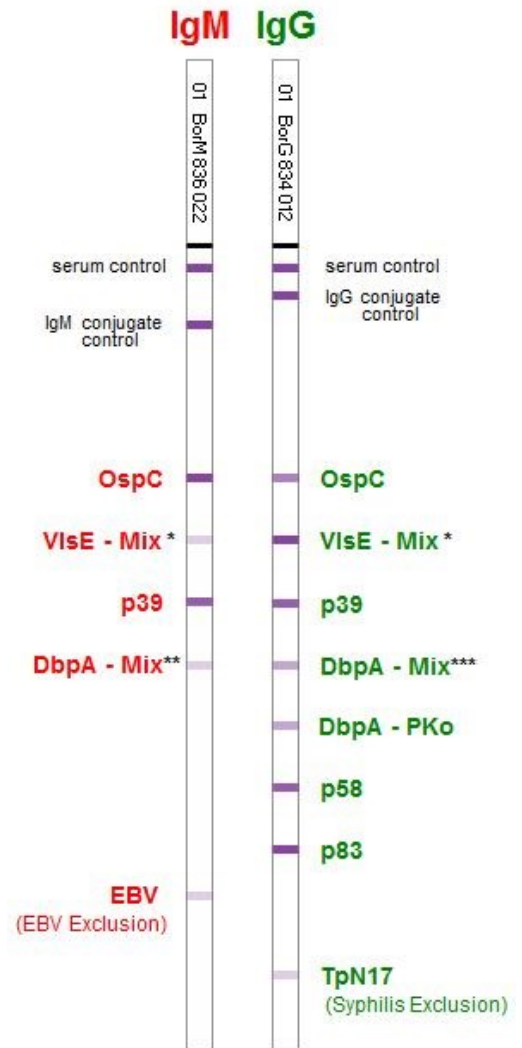
Borrelia Europe plus TpN17 LINE

referring to MIQ 12/2017

With native
OspC - dimers

Advantages of the Borrelia Europe LINE:

- ▼ Optimised combination of **native**, high purified (OspC, DbpA-Pko) and **recombinant** (VlsE, p83, p58, p39, DbpA -mix) *B. burgdorferi* s.l. antigens
- ▼ Antigen combination of all **important human-pathogen** geno-species, including *B. spielmanii* and *B. bavariensis*
- ▼ **DbpA**-antigen-combination of several strains: *B. afzelii* (PKo); *B. garinii* (PBr), *B. bavariensis* (PBi) (5) and *B. spielmanii* (A14S) (2,3,4)
- ▼ **VlsE** of two geno-species: *B. burgdorferi* s.s. (B31) and *B. garinii* (Ip90) (4)
- ▼ **Exclusion markers for EBV-primary and Syphilis** infections for an improved IgG/IgM serology
- ▼ High reproducibility → antigens are microdispensed onto defined positions
- ▼ Easy reading & interpretation, also with the LabImage LA[®]- software



(*) *B. burgdorferi* s.s. (B31) and *B. garinii* (Ip90)
 (**) *B. garinii* (PBr), *B. bavariensis* (PBi), *B. spielmanii* (A14S) and *B. afzelii* (PKo)
 (***) *B. garinii* (PBr), *B. bavariensis* (PBi) and *B. spielmanii* (A14S)

Order No.: WE225G32 or WE225G96, 32 or 96 IgG-strips
 WE224M32 or WE224M96, 32 or 96 IgM-strips

Literature:

(1) Wilske, B. et al., Med. Microbiol. Immunol. (1999); 188: 139-144; (2) Schulte-Spechtel, U. et al., IJMM 296 (2006) S1, 250-266; (3) Goettner, G. et al., Journal of Clinical Microbiology, Aug. 2005, p. 3602-3609; (4) Schulte-Spechtel, U. et al., Journal of Clinical Microbiology, Mar. 2003, p. 1299-1303; (5) Margos G. et al., American Society for Microbiology June 2009

F_BorELISA_LINE_20160430-03e



VIROTECH Diagnostics GmbH Löwenplatz 5 D-65428 Rüsselsheim
 ☎ +49 (0)6142 69090 📠 +49 (0)6142 690919
 info@virotechdiagnostics.com www.virotechdiagnostics.com

